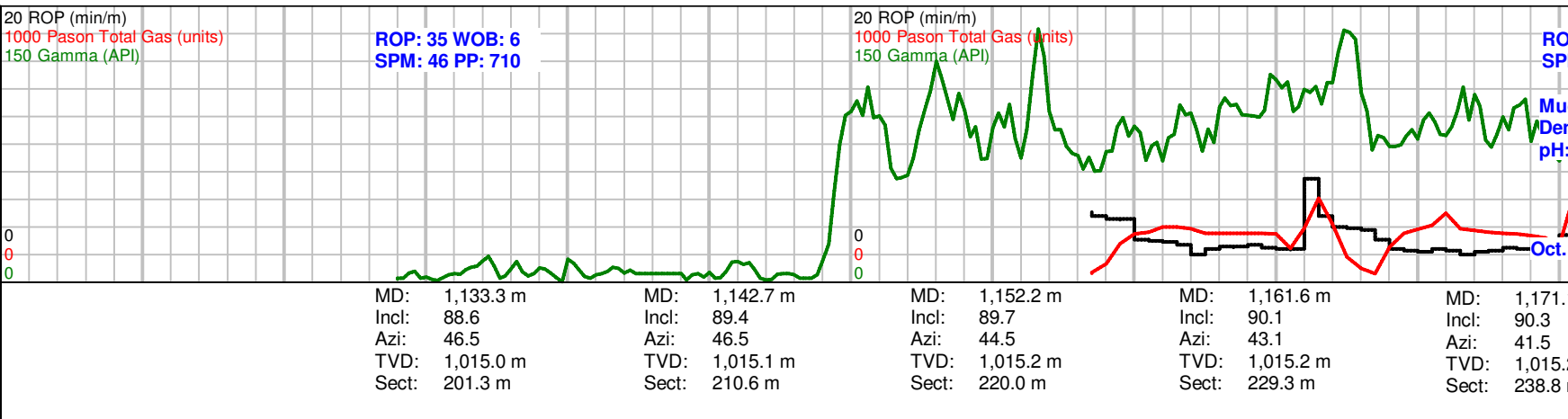
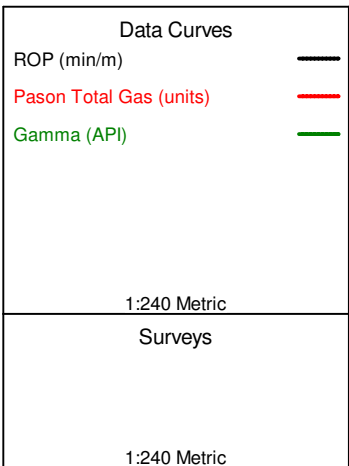


Printed by GEOstrip HZ Striplog version 3.6.3.1 (www.grsi.ca)



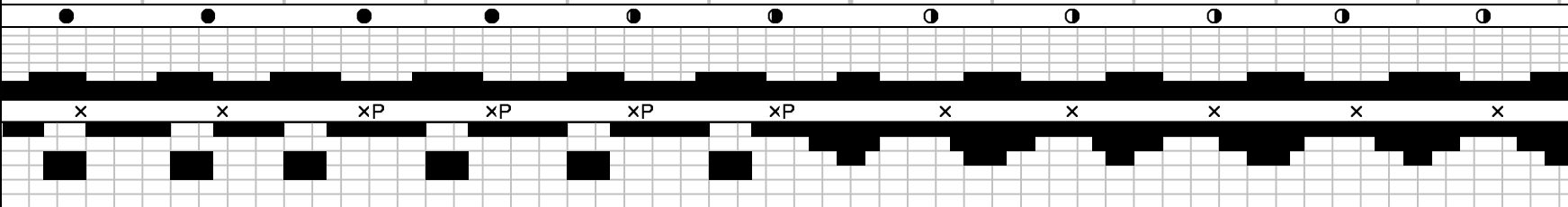
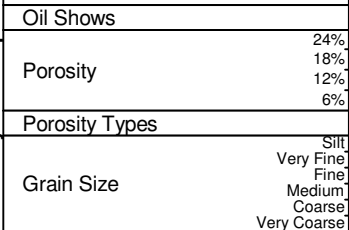
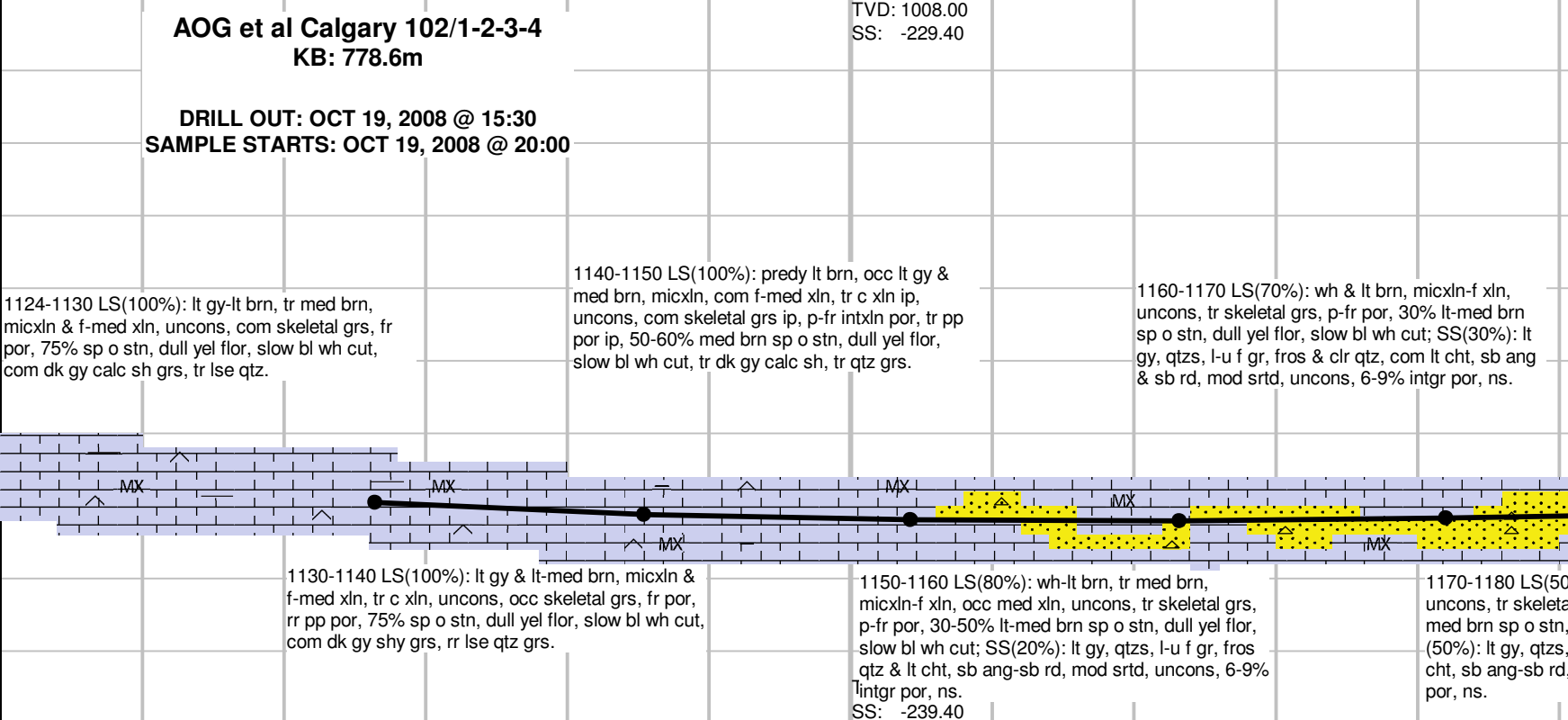
Sliding  
Depth



**AOG et al Calgary 102/1-2-3-4  
KB: 778.6m**

**DRILL OUT: OCT 19, 2008 @ 15:30  
SAMPLE STARTS: OCT 19, 2008 @ 20:00**

**Well Bore Cross Section**



WOB: 6  
M: 45 PP: 1560

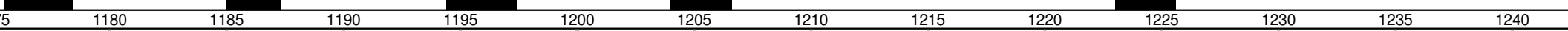
Mud: N2+Water  
Den: 1000 Vis: 28  
pH: 12.5 FL: 20

20, 2008 @ 00:00

20 ROP (min/m)  
1000 Pason Total Gas (units)  
150 Gamma (API)

Mud: N2+Water  
Den: 1010 Vis: 28  
pH: 12.5 FL: 20

1 m	MD: 1,180.5 m	MD: 1,189.9 m	MD: 1,199.4 m	MD: 1,208.9 m	MD: 1,218.3 m	MD: 1,227.8 m	MD: 1,237.3 m
	Incl: 90.6	Incl: 90.9	Incl: 91.0	Incl: 91.1	Incl: 91.1	Incl: 91.4	Incl: 91.1
	Azi: 39.3	Azi: 37.1	Azi: 34.9	Azi: 33.2	Azi: 32.7	Azi: 31.2	Azi: 30.1
2 m	TVD: 1,015.1 m	TVD: 1,015.0 m	TVD: 1,014.8 m	TVD: 1,014.6 m	TVD: 1,014.5 m	TVD: 1,014.3 m	TVD: 1,014.0 m
m	Sect: 248.2 m	Sect: 257.6 m	Sect: 267.1 m	Sect: 276.5 m	Sect: 285.9 m	Sect: 295.4 m	Sect: 304.8 m



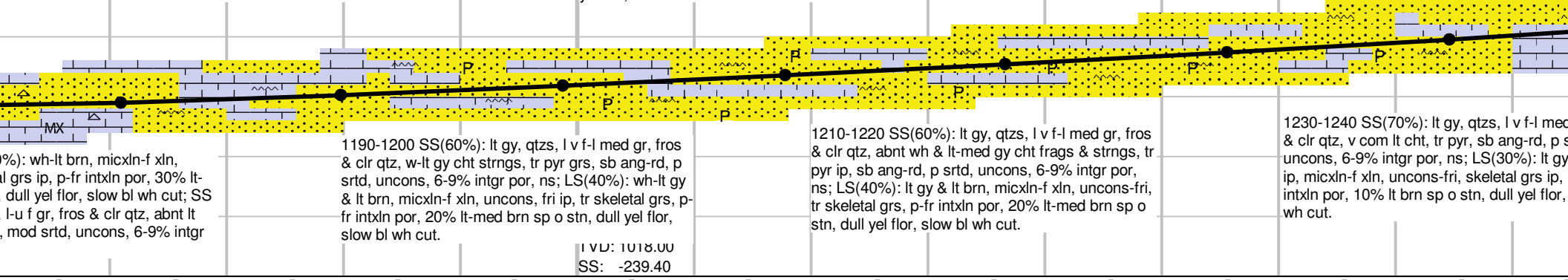
TVD: 1008.00  
SS: -229.40

1180-1190 SS(50%): lt gy, qtzs, l-u f gr, fros & clr qtz, wh-med gy cht strgs & frags, sb ang-rd, mod srted, unconcs, 6-9% intgr por, ns; LS(50%): wh-lt brn, micxln-f xln, unconcs-fri, tr skeletal grs, p-fr intxln por, 30% lt-med brn sp o stn, dull yel flor, slow bl wh cut.

1200-1210 SS(60%): lt gy, qtzs, l v f-l med gr, fros & clr qtz, w-med gy cht strgs, tr pyr, sb ang-rd, p srted, unconcs, 6-9% intgr por, ns; LS(40%): lt gy, wh-lt brn ip, micxln-f xln, unconcs-fri, tr skeletal grs, p-fr intxln por, 20% lt-med brn sp o stn, dull yel flor, slow bl wh cut.

1220-1230 SS(60%): lt gy, qtzs, l v f-l med gr, fros & clr qtz, abnt wh-lt gy cht strgs, tr pyr ip, sb ang-rd, p srted, unconcs, 6-9% intgr por, ns; LS(40%): lt brn & lt gy, micxln-f xln, unconcs-fri, skeletal grs ip, p-fr intxln por, 10% lt brn sp o stn, dull yel flor, slow bl wh cut.

1240-1245 SS(60%): lt gy, qtzs, l v f-l med gr, fros & clr qtz, abnt wh-lt gy cht strgs, tr pyr ip, sb ang-rd, p srted, unconcs, 6-9% intgr por, ns; LS(40%): lt brn & lt gy, micxln-f xln, unconcs-fri, skeletal grs ip, p-fr intxln por, 10% lt brn sp o stn, dull yel flor, slow bl wh cut.

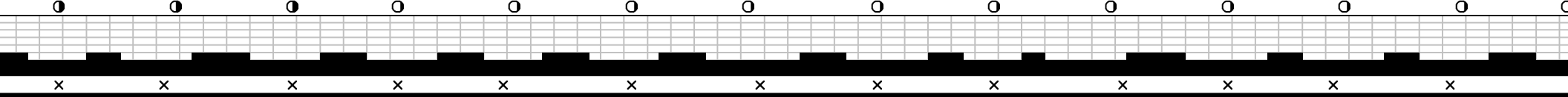


1190-1200 SS(60%): lt gy, qtzs, l v f-l med gr, fros & clr qtz, w-lt gy cht strgs, tr pyr grs, sb ang-rd, p srted, unconcs, 6-9% intgr por, ns; LS(40%): wh-lt gy & lt brn, micxln-f xln, unconcs, fri ip, tr skeletal grs, p-fr intxln por, 20% lt-med brn sp o stn, dull yel flor, slow bl wh cut.

1210-1220 SS(60%): lt gy, qtzs, l v f-l med gr, fros & clr qtz, abnt wh & lt-med gy cht frags & strgs, tr pyr ip, sb ang-rd, p srted, unconcs, 6-9% intgr por, ns; LS(40%): lt gy & lt brn, micxln-f xln, unconcs-fri, tr skeletal grs, p-fr intxln por, 20% lt-med brn sp o stn, dull yel flor, slow bl wh cut.

1230-1240 SS(70%): lt gy, qtzs, l v f-l med gr, fros & clr qtz, v com lt cht, tr pyr, sb ang-rd, p srted, unconcs, 6-9% intgr por, ns; LS(30%): lt gy & lt brn, micxln-f xln, unconcs-fri, skeletal grs ip, p-fr intxln por, 10% lt brn sp o stn, dull yel flor, slow bl wh cut.

TVD: 1018.00  
SS: -239.40



20 ROP (min/m)  
 1000 Pason Total Gas (units)  
 150 Gamma (API)

Mud: N2+Water  
 Den: 1010 Vls: 28  
 pH: 12.0 FL: 20

ROP: 30 WOB: 7  
 SPM: 46 PP: 3000

20 ROP (min/m)  
 1000 Pason Total Gas (units)  
 150 Gamma (API)

Oct. 20, 2008 @ 06:00

MD: 1,246.8 m	MD: 1,256.3 m	MD: 1,265.7 m	MD: 1,275.1 m	MD: 1,284.6 m	MD: 1,293.9 m	MD: 1,303.3 m
Incl: 91.8	Incl: 92.2	Incl: 91.6	Incl: 91.3	Incl: 92.1	Incl: 91.2	Incl: 90.5
Azi: 29.4	Azi: 29.5	Azi: 30.6	Azi: 31.3	Azi: 32.1	Azi: 33.1	Azi: 33.5
TVD: 1,013.8 m	TVD: 1,013.5 m	TVD: 1,013.2 m	TVD: 1,012.9 m	TVD: 1,012.7 m	TVD: 1,012.4 m	TVD: 1,012.2 m
Sect: 314.2 m	Sect: 323.6 m	Sect: 332.0 m	Sect: 342.4 m	Sect: 351.7 m	Sect: 361.1 m	Sect: 370.5 m

1245 1250 1255 1260 1265 1270 1275 1280 1285 1290 1295 1300 1305

TVD: 1008.00  
 SS: -229.40

TVD: 1008.00  
 SS: -229.40

1250-1260 LS(60%): lt gy-lt brn, tr wh, micxln-f  
 cons, occ fri, skeletal grs, p-fr intxln por,  
 lt-med brn sp o stn, dull yel flor, slow bl  
 SS(40%): lt gy, qtzs, l v f-l med gr, fros &  
 abnt cht, tr pyr, sb ang-rd, p srted, uncon  
 intgr por, ns.

1260-1265 SS(50%): lt gy, clr, op, qtz, lthc grs,  
 uncon, f-med gr, tr vf gr, p srtg, sb rd-mod w rd, g  
 por, no shows; SH(30%): lt gy, fnt brn, sb blk-rr sb  
 fis, fltg sd and lthc grs, abnt pyr; LS(20%): lt-med brn,  
 tr crm, med-c xln, uncon, fous, fr intxln por, g sec  
 por, 80% spty o stn, dull yel flor, slow bl wh cut.

1280-1290 LS(80%): lt-med brn, tr wh-crm,  
 uncon, f-c xln, com rexl skeletal grs, fr intxln por,  
 g pp and vug por, 80% spty-even o stn, dull yel  
 flor, sl bl wh cut; SH(10%): lt gn, lt gy, sb blk, rr  
 sb fis, ip glauc, fltg sd and lthc grs; PYR(10%).

1300-1310 LS(80%): lt-med brn  
 f-c xln, com rexl skeletal grs, fr  
 vug por, 80% spty-even o stn, d  
 cut; SH(10%): lt gn, lt gy, sb blk  
 fltg sd and lthc grs; PYR(10%).

1250-1260 LS(80%): lt gy, abnt lt brn, tr wh,  
 micxln-f xln, occ med xln, tr skeletal grs, p-fr  
 intxln por, 10-20% lt-med brn sp o stn, dull yel  
 flor, slow bl wh cut, tr dk gy calc shy grs; SS  
 (20%): lt gy, qtzs, l v f-l med gr, fros & clr qtz,  
 abnt cht, tr pyr, sb ang-rd, p srted, uncon, 6-9%  
 intgr por, ns.

1265-1280 LS(90%): lt-med brn, tr wh-crm, uncon-rr  
 cons, med-c xln, com rexl skeletal grs, g intxln por, g pp  
 and vug por, 80% spty-even o stnd, dull yel flor, slow bl wh  
 cut, abnt pyr nod; SH(10%): lt gn, fnt brn, sb blk-rr sb fis, tr  
 glauc, fltg sd grs.

1290-1300 LS(80%): lt-med brn, tr wh-crm,  
 uncon, f-c xln, com rexl skeletal grs, fr intxln por,  
 g pp and vug por, 80% spty-even o stn, dull yel  
 flor, sl bl wh cut; SH(10%): lt gn, lt gy, sb blk, rr  
 sb fis, ip glauc, fltg sd and lthc grs; PYR(10%).

TVD: 1018.00  
 SS: -239.40

TVD: 1018.00  
 SS: -239.40

x x x x x V x V x V x V x V

Mud: N2+Water  
 Den: 1010 Vis: 28  
 pH: 12.5 FL: 20

20 ROP (min/m)  
 1000 Pason Total Gas (units)  
 150 Gamma (API)

Oct. 20, 2008 @ 12:00

MD: 1,312.7 m	MD: 1,322.2 m	MD: 1,331.6 m	MD: 1,341.0 m	MD: 1,350.5 m	MD: 1,360.0 m	MD: 1,369.4 m
Incl: 90.6	Incl: 90.6	Incl: 89.7	Incl: 88.4	Incl: 88.0	Incl: 88.6	Incl: 88.6
Azi: 34.3	Azi: 35.1	Azi: 35.4	Azi: 35.6	Azi: 35.8	Azi: 0.0	Azi: 0.0
TVD: 1,012.2 m	TVD: 1,012.0 m	TVD: 1,012.0 m	TVD: 1,012.2 m	TVD: 1,012.5 m	TVD: 1,012.8 m	TVD: 1,013.0 m
Sect: 379.9 m	Sect: 389.3 m	Sect: 398.7 m	Sect: 408.1 m	Sect: 417.6 m	Sect: 427.1 m	Sect: 436.5 m

1310 1315 1320 1325 1330 1335 1340 1345 1350 1355 1360 1365 1370 1375

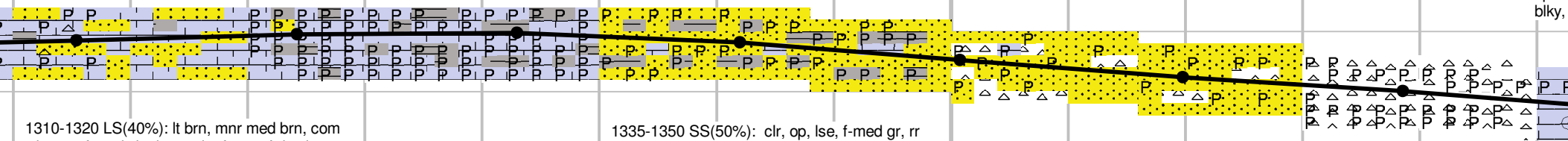
tr wh-crm, unconc,  
 intxn por, g pp and  
 ull yel flor, sl bl wh  
 y, rr sb fis, ip glauc,

1320-1335 PYR(80%); LS(10%): ; lt brn, mnr  
 med brn, com wh-crm, f-med xln, ip crpxln, fous,  
 fr intxn por, fr sec por, 25% sp o stn, live o on  
 wash; SH(10%): lt gy, lt gn, sb blk, tr sb fis, fltg  
 sd and lthc grs, tr wh-lt gy cht gr.

TVD: 1008.00  
 SS: -229.40

1350-1365 SS(80%): lt gy, clr, op, qtz, lthc grs,  
 f-med gr, rr vf gr, p srtg, sb rd-w rd, fr por, no  
 show, com cht, wh-lt gy, pyrc; PYR(20%).

1375-  
 xln, m  
 v g in  
 sp-ev  
 blk,



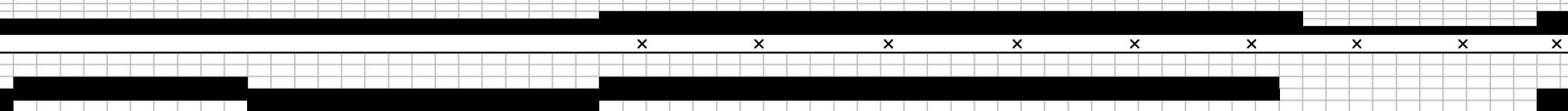
1310-1320 LS(40%): lt brn, mnr med brn, com  
 wh-crm, f-med xln, ip crpxln, fous, fr intxn por,  
 fr sec por, 25% sp o stn, live o on wash; SS  
 (20%): lt gy, clr, op, lse, f-med gr, rr vf gr, sb  
 w rd, med srtg, g por, no show; SH(20%): lt gy,  
 lt gn, sb blk, tr sb fis, fltg sd and lthc grs; PYR  
 (20%).

1335-1350 SS(50%): clr, op, lse, f-med gr, rr  
 vf gr, sb rd-w rd, med srtg, g por, no show; SH  
 (30%): lt gy, lt gn, sb blk, com sdy; PYR  
 (20%).

TVD: 1018.00  
 SS: -239.40

1365-1375: PYR(80%); CHT(20%): lt gy  
 wh, ang, pyrc, tr lt gn and lt gy sh, ip sdy  
 tr ls grs, tr sh, lt gy, lt gn, sdy, tr f-med gr  
 sd, sb rd-w rd.

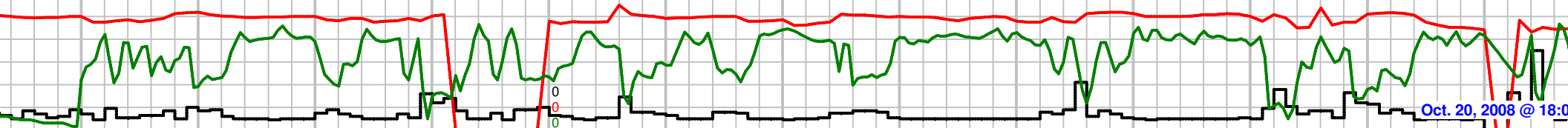
0 0 0 0 0 0 0 0 0 0



Mud: N2+Water  
Den: 1010 Vis: 28  
pH: 10.5 FL: 20

20 ROP (min/m)  
1000 Pason Total Gas (units)  
150 Gamma (API)

ROP: 30 WOB: 7  
SPM: 46 PP: 3500



MD: 1,379.4 m	MD: 1,388.8 m	MD: 1,398.3 m	MD: 1,407.7 m	MD: 1,417.4 m	MD: 1,427.1 m	MD: 1,436.8 m
Incl: 88.3	Incl: 88.7	Incl: 89.6	Incl: 89.7	Incl: 90.0	Incl: 90.5	Incl: 90.0
Azi: 0.0	Azi: 36.5	Azi: 36.2	Azi: 35.7	Azi: 35.3	Azi: 35.4	Azi: 36.3
TVD: 1,013.3 m	TVD: 1,013.5 m	TVD: 1,013.7 m	TVD: 1,013.7 m	TVD: 1,013.7 m	TVD: 1,013.7 m	TVD: 1,013.7 m
Sect: 446.5 m	Sect: 455.9 m	Sect: 465.4 m	Sect: 474.8 m	Sect: 484.5 m	Sect: 494.2 m	Sect: 503.9 m

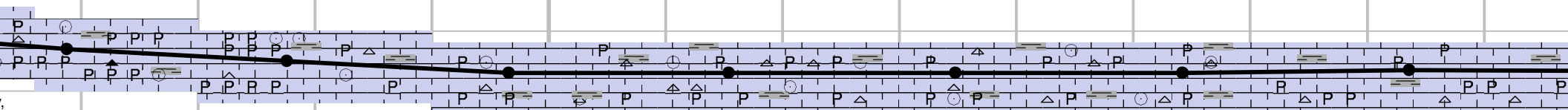
1380 1385 1390 1395 1400 1405 1410 1415 1420 1425 1430 1435 1440

TVD: 1008.00  
SS: -229.40

1390 LS(50%): lt-med brn, uncons, predy c  
nr med xln, com rexl skeletal grs,  
txln por, g-ex pp and vug por, 100% o stnd,  
en, yel flor, bl wh cut, tr sh strgs, lt gn, sb  
sl calc, tr lt cold cht; PYR(50%).

1400-1415 LS(80%): lt-med brn, occ dk brn, uncons, tr cons,  
med-c xln, com rexl skeletal grs, crin, v g intxln por, g pp and  
vug por, 100% sp-even o stn, yel flor, bl wh cut, sh strgs, lt gn,  
lt gy, sb blk-y-sb fis, tr lt cht; PYR(20%).

1430-1440 LS(80%): lt-med brn, uncons, occ  
cons ip, med-c xln, com rexl skeletal grs, g int  
por, g pp & vug por, 100% med brn even o str  
yel flor, bl wh cut, com lt gy-gn sdy sh strgs, tr  
cht; PYR(20%).



1390-1400 LS(80%): lt-med brn, occ dk brn,  
uncons, tr cons, med-c xln, com rexl skeletal  
grs, crin, v g intxln por, g pp and vug por, 100%  
sp-even o stn, yel flor, bl wh cut, sh strgs, lt gn,  
lt gy, sb blk-y-sb fis, tr lt cht; PYR(20%).

1415-1430 LS(90%): lt-med brn, occ dk brn, uncons, tr cons, med-  
c xln, com rexl skeletal grs, crin, v g intxln por, g pp and vug por,  
100% sp-even o stn, yel flor, bl wh cut, com sh strgs, lt gy, lt gn, ip  
sdy, tr cht; PYR(10%).

1440-1450 LS  
cons, med-c  
g pp & vug po  
bl wh cut, cor  
cht; PYR(20%)

TVD: 1018.00  
SS: -239.40

PV xPV x P V x P V xPV x PVV x P V x PV x P V x P V xP V xVP xVP xVP

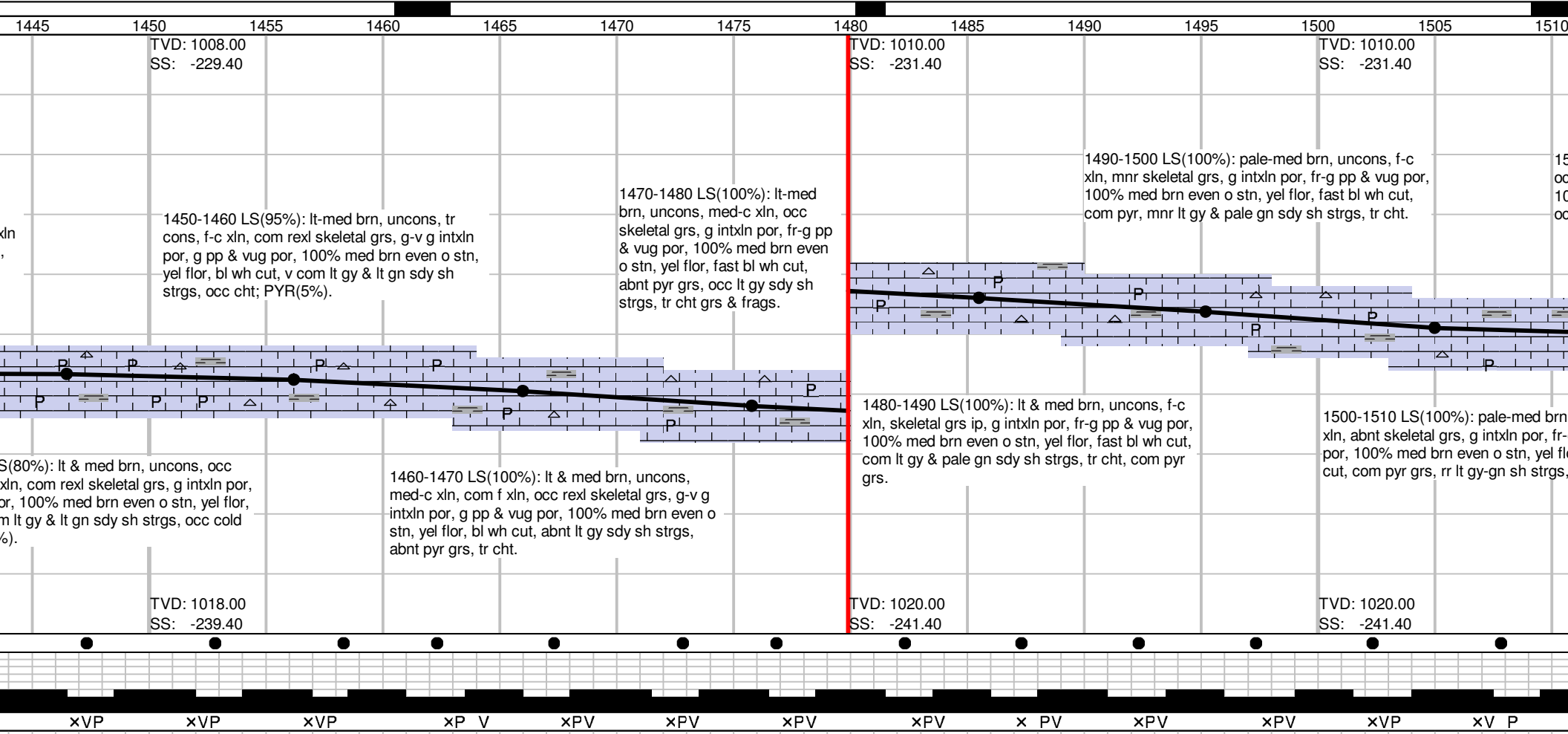
20 ROP (min/m)  
 1000 Pason Total Gas (units)  
 150 Gamma (API)

Very poor sample  
 quality, 1490-1620m.

20 ROP (min/m)  
 1000 Pason Total Gas (units)  
 150 Gamma (API)

Mud: N2+Water  
 Den: 1010 Vis: 28  
 pH: 11 FL: 20

MD: 1,446.6 m	MD: 1,456.3 m	MD: 1,466.1 m	MD: 1,475.8 m	MD: 1,485.6 m	MD: 1,495.3 m	MD: 1,505.1 m
Incl: 89.7	Incl: 89.3	Incl: 88.4	Incl: 88.7	Incl: 89.0	Incl: 88.2	Incl: 88.6
Azi: 37.1	Azi: 36.2	Azi: 37.5	Azi: 37.9	Azi: 37.2	Azi: 37.1	Azi: 37.9
TVD: 1,013.7 m	TVD: 1,013.8 m	TVD: 1,014.0 m	TVD: 1,014.2 m	TVD: 1,014.4 m	TVD: 1,014.6 m	TVD: 1,014.9 m
Sect: 513.7 m	Sect: 523.1 m	Sect: 533.1 m	Sect: 542.9 m	Sect: 552.7 m	Sect: 562.4 m	Sect: 572.1 m



xVP xVP xVP xP V xPV xPV xPV xPV xPV x PV xPV xPV xVP xV P

ROP: 35 WOB: 7  
SPM: 46 PP: 3400

20 ROP (min/m)  
1000 Pason Total Gas (units)  
150 Gamma (API)

Oct. 21, 2008 @ 00:00

MD: 1,514.8 m  
Incl: 90.1  
Azi: 37.7  
TVD: 1,015.0 m  
Sect: 581.8 m

MD: 1,524.4 m  
Incl: 90.9  
Azi: 36.5  
TVD: 1,014.9 m  
Sect: 591.5 m

MD: 1,534.2 m  
Incl: 91.0  
Azi: 36.1  
TVD: 1,014.8 m  
Sect: 601.3 m

MD: 1,544.0 m  
Incl: 90.8  
Azi: 35.8  
TVD: 1,014.6 m  
Sect: 611.0 m

MD: 1,553.7 m  
Incl: 90.9  
Azi: 36.3  
TVD: 1,014.5 m  
Sect: 620.8 m

MD: 1,563.4 m  
Incl: 90.4  
Azi: 36.1  
TVD: 1,014.4 m  
Sect: 630.5 m

MD: 1,573.2 m  
Incl: 89.2  
Azi: 35.5  
TVD: 1,014.4 m  
Sect: 640.2 m

1515 1520 1525 1530 1535 1540 1545 1550 1555 1560 1565 1570 1575

TVD: 1010.00  
SS: -231.40

1550-1560 NO SAMPLE

1570-1580 LS(100%): pale  
xln, mnr rexl skeletal grs, g  
por, 100% med brn even o  
cut, tr pyr grs, tr cht ip, tr s

1510-1520 LS(100%): lt-med brn, uncons, f-c xln,  
c rexl skeletal grs, g intxln por, g pp & vug por,  
100% med brn even o stn, yel flor, fast bl wh cut,  
c pyr, com ss & sh strgs, occ cht.

1530-1540 LS(90%): lt-med brn, occ wh-pale brn,  
uncons, f-med xln, mnr c xln, mnr rexl skeletal  
grs, g intxln por, fr pp & vug por, 100% med brn  
even o stn, yel flor, fast bl wh cut, tr pyr, tr cht, tr  
sh strgs; SS(10%): lt gy, qtzs, u v f-l med gr, fros  
& clr qtz, com cht, sb ang-sb rd, p srted, uncons,  
6-9% intgr por, ns.

uncons, f-c  
g vug & pp  
or, fast bl wh  
tr cht.

1520-1530 LS(100%): lt & med brn, tr wh-pale  
brn, uncons, f-med xln, com c xln, mnr rexl  
skeletal grs, g intxln por, fr-g pp & vug por, 100%  
med brn even o stn, yel flor, fast bl wh cut, tr pyr,  
com ss & sh strgs, tr cht ip.

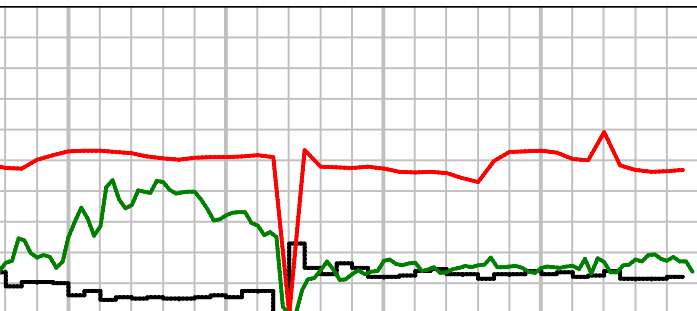
1540-1550 LS(90%): lt & med brn, uncons, f-med  
xln, c xln ip, occ rexl skeletal grs, g intxln por, fr-g  
pp & vug por, 100% med brn even o stn, yel flor,  
fast bl wh cut, tr pyr & cht grs, sh strgs ip; SS  
(10%): lt gy, qtzs, u v f-l med gr, fros & clr qtz, cht  
ip, sb ang-sb rd, p srted, uncons, 6-9% intgr por,  
ns.

1560-1570 LS(100%): pale-med brn, occ wh-lt  
gy, uncons, f-c xln, mnr rexl skeletal grs, g intxln  
por, fr-g pp & vug por, 100% med brn even o  
stn, yel flor, fast bl wh cut, tr pyr grs, tr cht, occ  
ss & sh strgs.

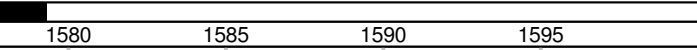
TVD: 1020.00  
SS: -241.40

xVP xVP xVP xVP xVP xVP xVP xVP xVP xVP

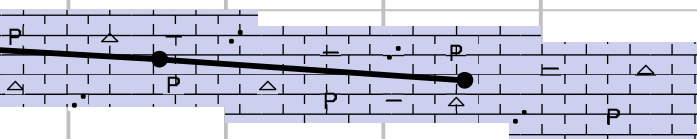
PVx PVx PxV xP



m	MD: 1,582.9 m	MD: 1,592.6 m
	Incl: 88.3	Incl: 88.6
	Azi: 34.4	Azi: 34.3
m	TVD: 1,014.6 m	TVD: 1,014.9 m
	Sect: 649.9 m	Sect: 659.6 m



e-med brn, uncons, f-c  
 intxn por, fr-g pp & vug  
 stn, yel flor, fast bl wh  
 s & sh grs.



1580-1590 LS(100%): pale-lt brn, tr med brn,  
 uncons, f-c xln, mnr rexl skeletal grs, g intxn  
 por, fr pp & vug por, 80% med brn even o stn,  
 yel flor, fast bl wh cut, tr pyr, tr ss & sh grs, tr  
 cht.

